



FALCONView Virtual Appliance (VA) Instantaneous Network Discovery and Diagnostics

Features & Applications

- Real-Time Network Discovery and Visualization
- Network Wide QoS Visibility
- Quick Diagnosis of Network Faults
- "What-if" Network Planning and Analysis with Real Network Data
- Network Information at Fingertips
- Network Monitoring and Diagnostics
- Firefighting of Managed Networks (Portable)
- Discovery & Mapping of Disparate Networks

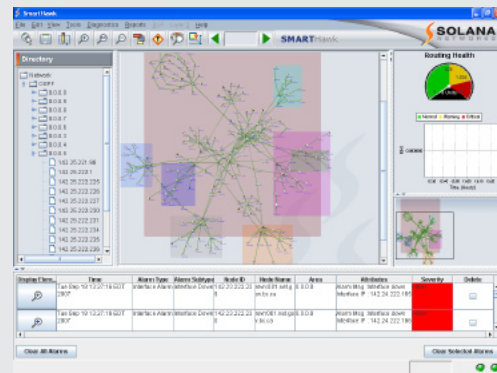
FalconView VA Benefits

- Instantaneous Insight into the Routing Health of your IP Network
- Improved Productivity
- Lowered Operating Costs
- Reduced Network Downtime
- Efficient Network Planning and Maintenance
- Greater Customer/User Satisfaction
- No Additional Network Load
- Small Investment, Quick ROI

FalconView VA is the industry's first and only diagnostics and troubleshooting virtual appliance incorporating Route Analytics technology. By listening to the routing protocols FalconView VA can non-intrusively and in real-time give insight into the routing health of any IP network.

Visibility into the IP Cloud with Falcon Eyes

A major cause of IP network and application downtime is a direct result of logical flaws and mis-configurations of how data is routed through the network. FalconView VA solves these problems by becoming part of the "control plane" thereby providing real-time visibility into the dynamic operation of the entire network.



FalconView VA automatically discovers, monitors and visualizes multi-area networks in real-time

Real-Time Network Discovery and Visualization

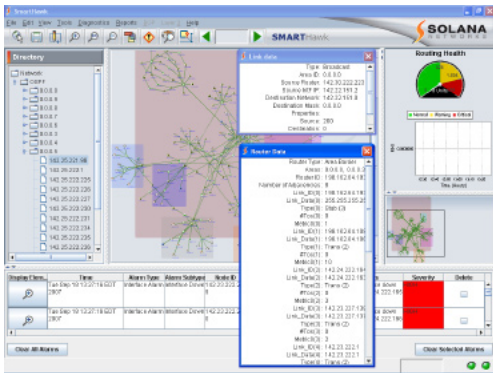
FalconView's proprietary technology allows for automatic discovery and visualization of your Layer 3 network in real-time. Using its clear and intuitive GUI, it is possible to quickly navigate your network and at the click of a button view routing details, attributes and metrics. Unlike SNMP solutions, SmartHawk 'listens' to the routing protocols and therefore does not add any load to your network.

Network-Wide QoS Visibility

The FalconView QoS Module expands on the routing analysis capability by providing network wide visibility into QoS and traffic patterns. By leveraging the real-time network topology map it is now possible to provide end-to-end visibility of network wide traffic without the need for numerous and costly probes or sniffers. Moreover, unlike other tools, FalconView allows the user to automatically analyze "path QoS", rather than manually scrutinizing individual links.

Quick Diagnosis of Network Faults

For improved network availability, FalconView continuously monitors networks and instantly alerts users of any potential problems. Difficult to diagnose problems such as link flapping, interface flapping, misconfiguration and routing anomalies are all displayed in real-time. Advanced troubleshooting and root-cause analysis can spot problems before they occur, thereby reducing downtime and operating costs.



Small Investment, Quick ROI

FalconView VA starts at \$1500. If the network is slow, so is business. A Gartner Group study states that "in a network with 130 users where the typical user needs access 80% of the time at a 98% availability level, the average yearly cost of downtime is over \$250,000. While in a 200-user network, and within the same network access requirements the costs spiral to over \$6 M /year".

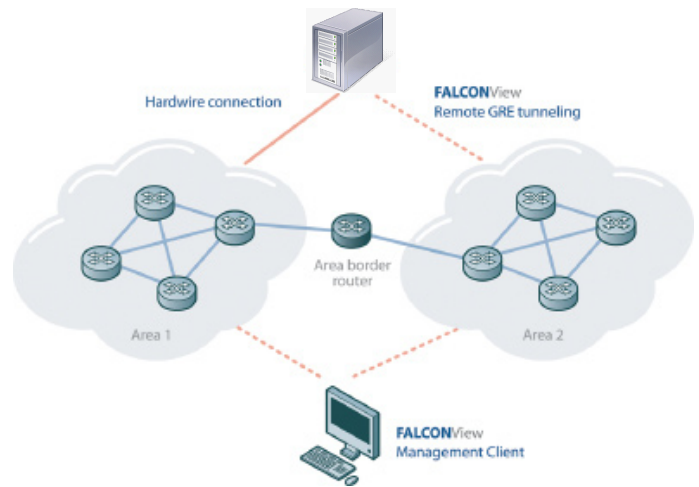
Network Information at Fingertips

From your network topology map you can in a click of a button obtain all network relevant information. Link costs, network element attributes, all network interfaces, most active router, bandwidth usage, class of service, topology traffic indicators and more. The easiness to obtain this information and its accuracy will increase productivity in other tasks such as traffic engineering, network growth planning, network maintenance, network troubleshooting and more.

"What-if" Network Planning and Analysis with Real Network Data

Ever wish you could go back in time and correct something? FalconView allows for effective planning and management of network changes and growth. Prior to implementation, network engineers can simulate changes allowing for predictable impact on network availability and performance. You can now make those changes secure in the knowledge that your network will be configured properly and that costs have been optimized. Network planning has never been easier.

FalconView VA - Deployment Diagram



Specifications & System Requirements:

Protocol:

OSPF (multi-area);

Scalability:

Supports up to 100+ routers;

Viewer Requirement:

Windows 2000/NT/XP, Linux, Solaris

Host Machine Requirements:

Intel Pentium 32 bit processor

1 GB RAM

2 GB Hard disk

Windows XP, Windows 2000

Ethernet port

Multiple Areas

FalconView supports visualization, monitoring and diagnostics of multi-area networks.

Remote GRE Tunneling

A connection can be established to multiple network areas using either a physical or logical connection.

Management Client

FalconView supports multiple management clients



T 613.596.2892
F 613.596.8924

web www.solananetworks.com
email info@solananetworks.com

Copyright© 2007 Solana Networks. All rights reserved.
fv_va_v24 sep/07